

National Forests and Grasslands in Texas
TERMINATION OF CLOSURE ORDER

UNITED STATES DEPARTMENT OF AGRICULTURE
U.S. FOREST SERVICE
2221 N. Raguet St, Lufkin, TX 75904

Sam Houston National Forest

Pursuant to Title 36 CFR 261.50(a) and (b), and the prohibitions listed in Order number

08-13-04-17-03, applicable to the Sam Houston National Forest dated August 25, 2017 and signed by William Taylor, the Order is hereby terminated for the following trails only:

- Double Lake Bike Trail (see portions on attached map)
- Lone Star Hiking Trail from west end trailhead #1 (FS219) to Stubblefield Recreation Area, including loops and connectors:
 - West Fork Trail,
 - Little Lake Creek Loop Trail,
 - Sand Branch Trail,
 - North Wilderness Trail, and
 - Pole Creek Loop.(See attached map.)

Executed in Lufkin, Texas this the 25th day of October, 2017.



/s/ William E. Taylor, Jr.

William E. Taylor, Jr.
Forest Supervisor
National Forests and Grasslands in Texas


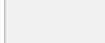
Double Lake Recreation Area Trails

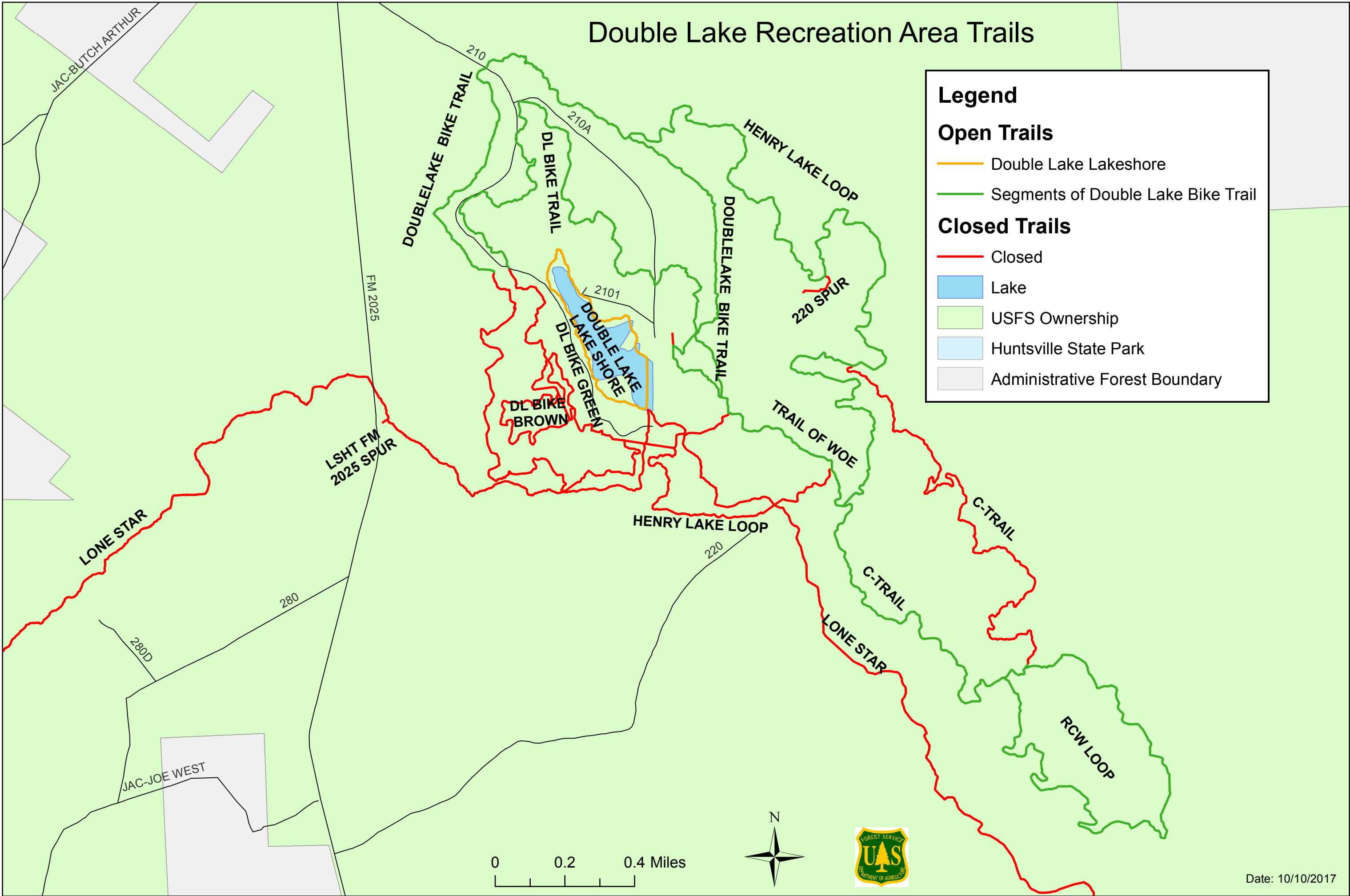
Legend

Open Trails

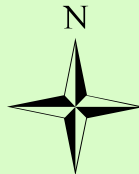
-  Double Lake Lakeshore
-  Segments of Double Lake Bike Trail

Closed Trails

-  Closed
-  Lake
-  USFS Ownership
-  Huntsville State Park
-  Administrative Forest Boundary



0 0.2 0.4 Miles



Legend

Open Trails

- Double Lake Lakeshore
- Double Lake Bike Trail
- Lone Star and Associated Trails

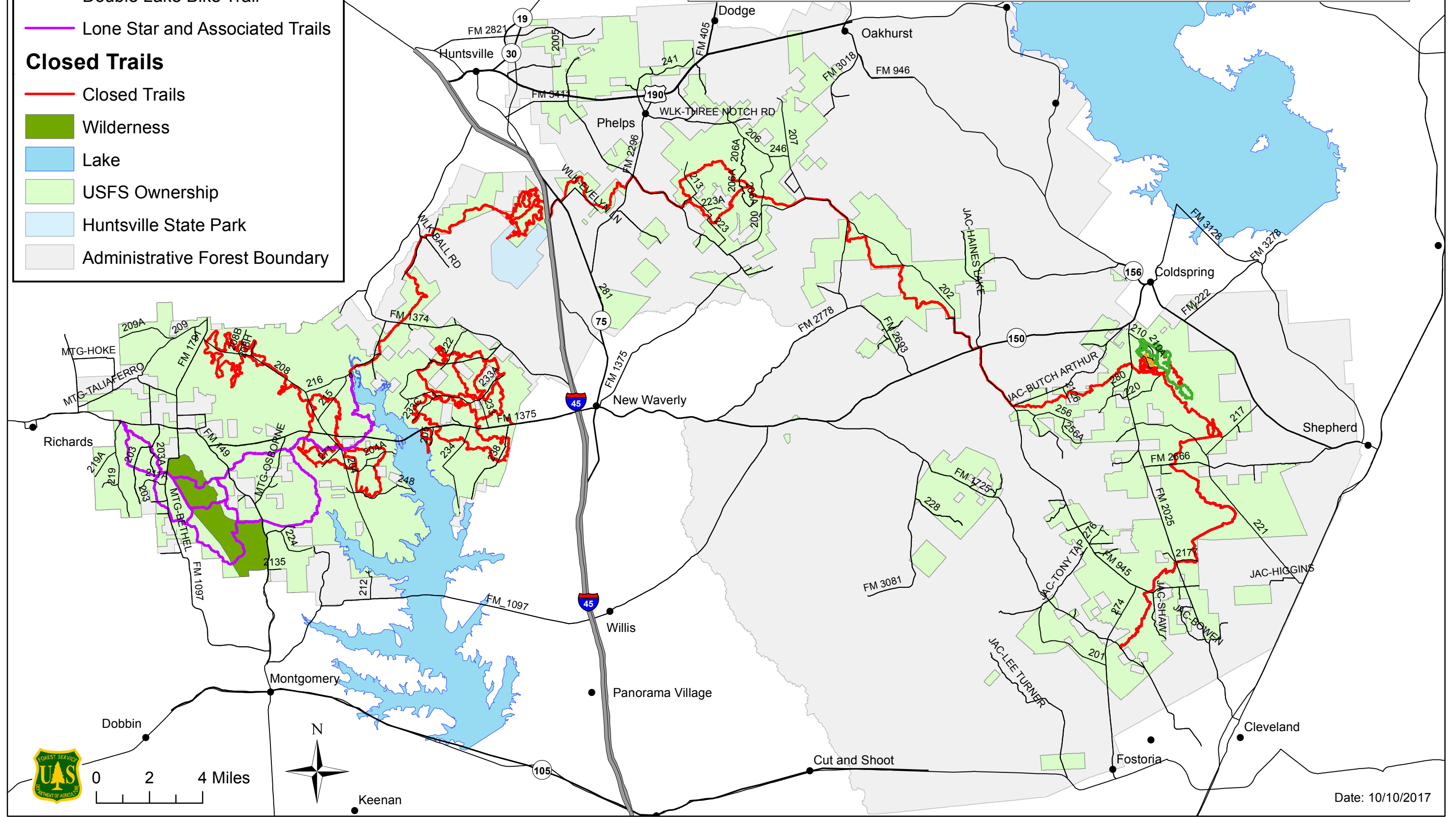
Closed Trails

- Closed Trails
- Wilderness
- Lake
- USFS Ownership
- Huntsville State Park
- Administrative Forest Boundary

Sam Houston National Forest

National Forests and Grasslands in Texas

Trail segments in red on the Sam Houston National Forest are closed in accordance with Supervisor's Order: 08-13-04-17-03.



0 2 4 Miles



Date: 10/10/2017