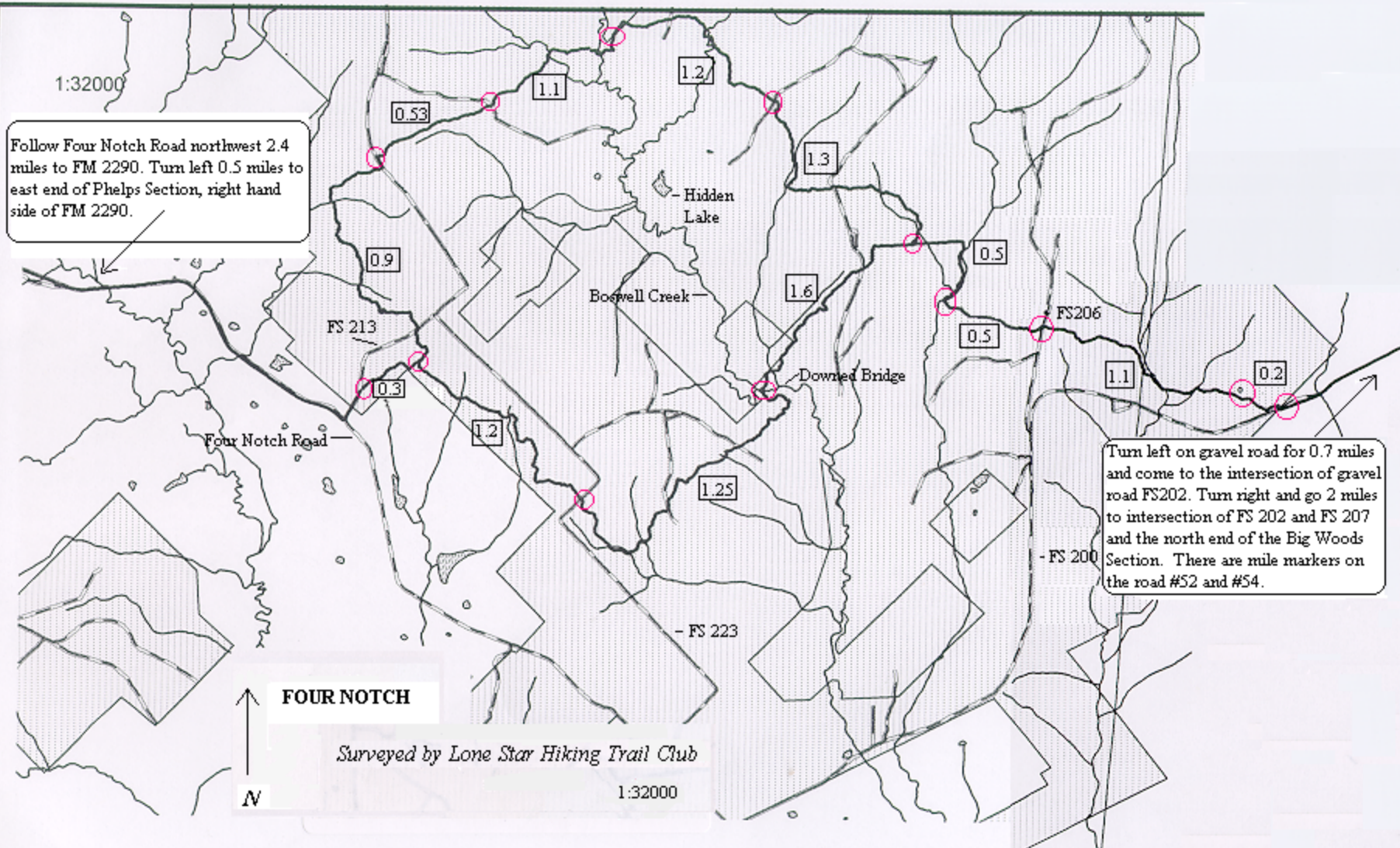


1:32000

Follow Four Notch Road northwest 2.4 miles to FM 2290. Turn left 0.5 miles to east end of Phelps Section, right hand side of FM 2290.



Turn left on gravel road for 0.7 miles and come to the intersection of gravel road FS202. Turn right and go 2 miles to intersection of FS 202 and FS 207 and the north end of the Big Woods Section. There are mile markers on the road #52 and #54.

**FOUR NOTCH**

*Surveyed by Lone Star Hiking Trail Club*

1:32000