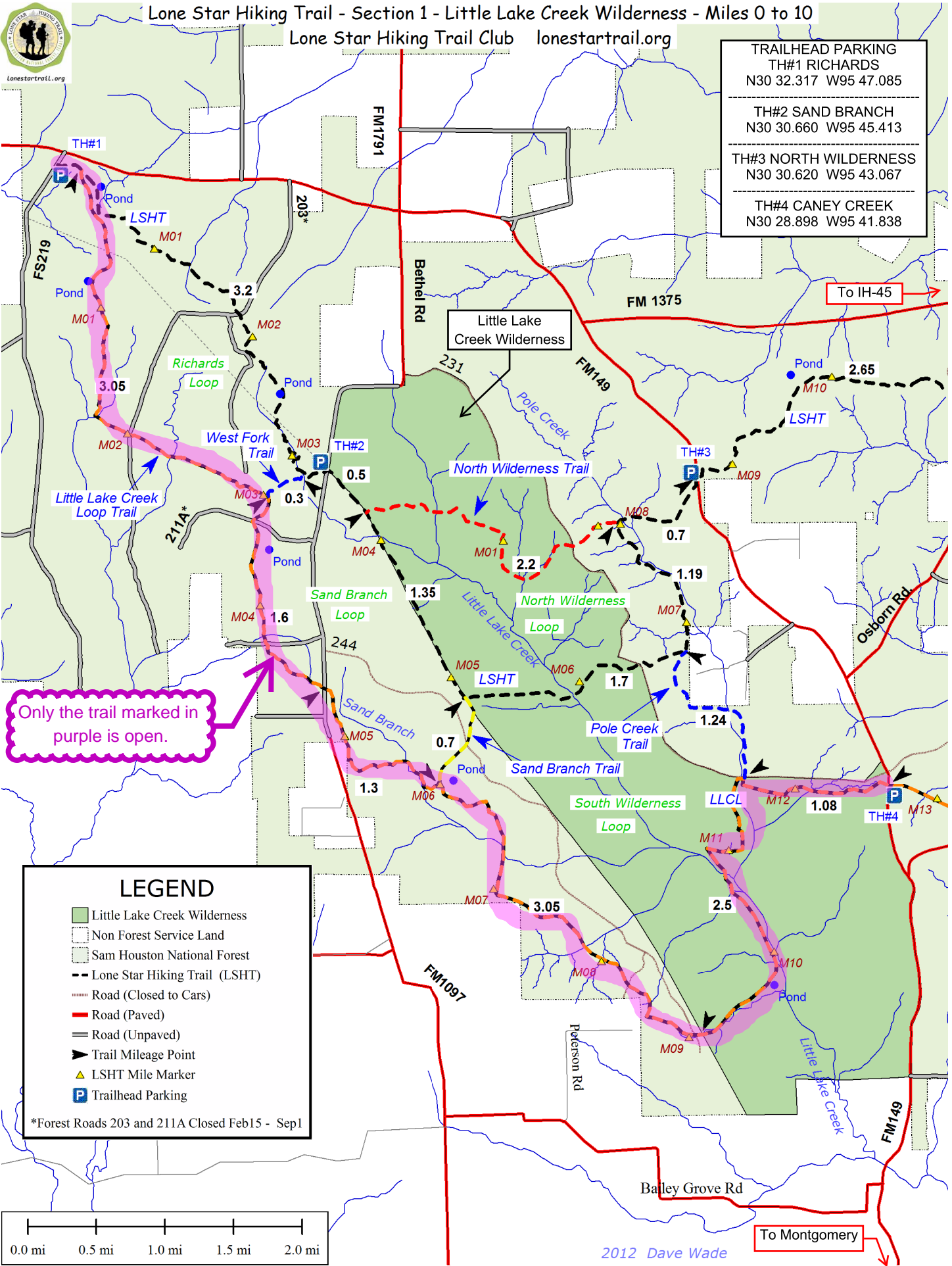




Lone Star Hiking Trail - Section 1 - Little Lake Creek Wilderness - Miles 0 to 10

Lone Star Hiking Trail Club lonestartrail.org

TRAILHEAD PARKING TH#1 RICHARDS N30 32.317 W95 47.085
TH#2 SAND BRANCH N30 30.660 W95 45.413
TH#3 NORTH WILDERNESS N30 30.620 W95 43.067
TH#4 CANEY CREEK N30 28.898 W95 41.838

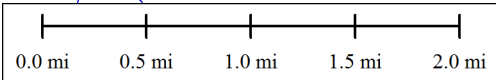


Only the trail marked in purple is open.

LEGEND

- Little Lake Creek Wilderness
- Non Forest Service Land
- Sam Houston National Forest
- Lone Star Hiking Trail (LSHT)
- Road (Closed to Cars)
- Road (Paved)
- Road (Unpaved)
- Trail Mileage Point
- LSHT Mile Marker
- Trailhead Parking

*Forest Roads 203 and 211A Closed Feb15 - Sep1



2012 Dave Wade To Montgomery