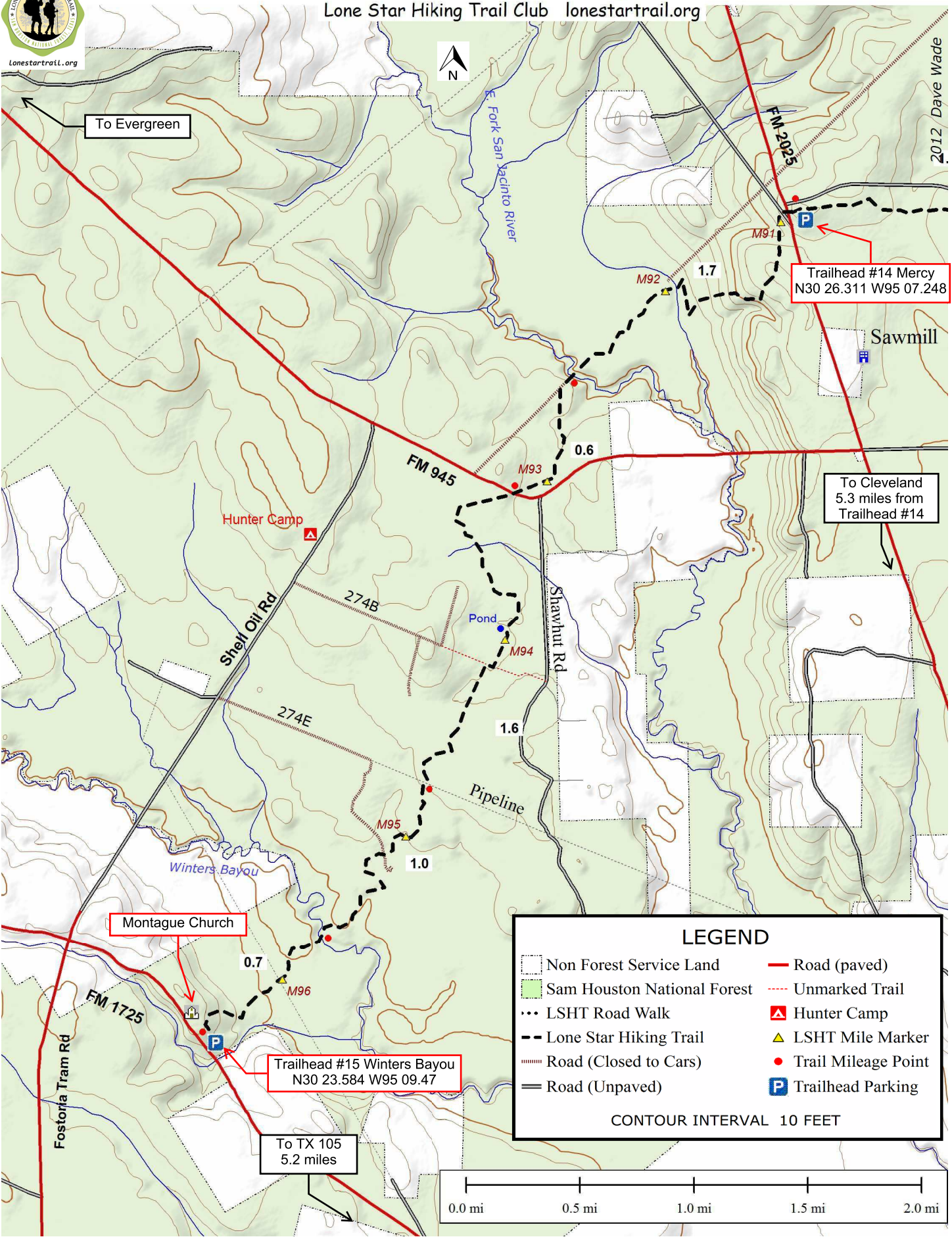




Lone Star Hiking Trail - Section 11 - Winters Bayou - Miles 90.9 - 96.5

Lone Star Hiking Trail Club lonestartrail.org

lonestartrail.org



To Evergreen

Trailhead #14 Mercy
N30 26.311 W95 07.248

To Cleveland
5.3 miles from
Trailhead #14

Montague Church

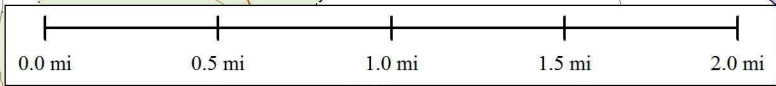
Trailhead #15 Winters Bayou
N30 23.584 W95 09.47

To TX 105
5.2 miles

LEGEND

- Non Forest Service Land
- Sam Houston National Forest
- LSHT Road Walk
- Lone Star Hiking Trail
- Road (Closed to Cars)
- Road (Unpaved)
- Road (paved)
- Unmarked Trail
- ▲ Hunter Camp
- ▲ LSHT Mile Marker
- Trail Mileage Point
- P Trailhead Parking

CONTOUR INTERVAL 10 FEET



2012 Dave Wade