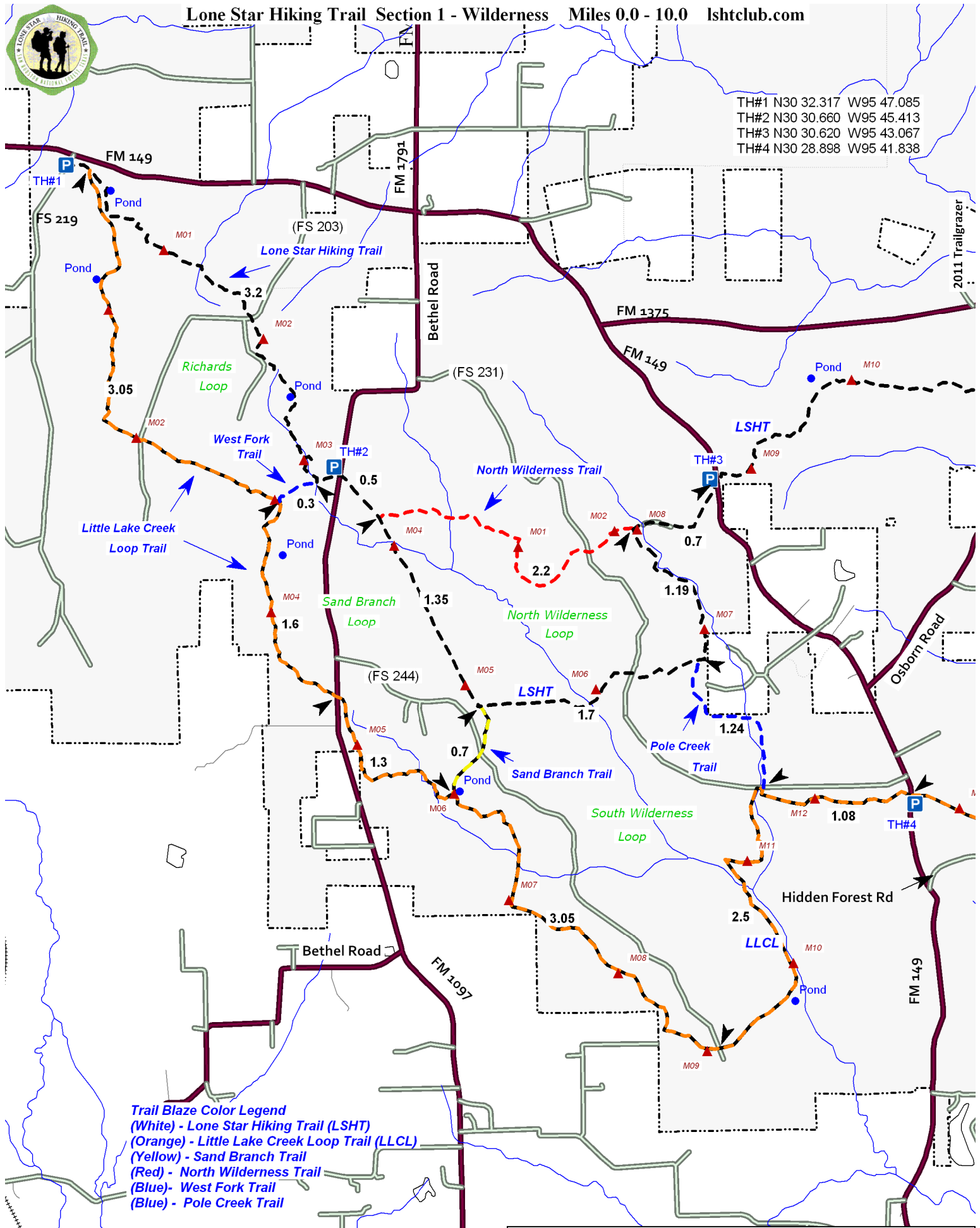


Lone Star Hiking Trail Section 1 - Wilderness Miles 0.0 - 10.0 lshtclub.com



TH#1 N30 32.317 W95 47.085
 TH#2 N30 30.660 W95 45.413
 TH#3 N30 30.620 W95 43.067
 TH#4 N30 28.898 W95 41.838



Trail Blaze Color Legend
 (White) - Lone Star Hiking Trail (LSHT)
 (Orange) - Little Lake Creek Loop Trail (LLCL)
 (Yellow) - Sand Branch Trail
 (Red) - North Wilderness Trail
 (Blue) - West Fork Trail
 (Blue) - Pole Creek Trail

FS 203 is open to cars during deer rifle season.
 FS 231 and FS 244 are CLOSED to automobiles.

