

Lone Star Hiking Trail - Section 9 - Big Creek - Miles 73-83



LEGEND

- Lone Star Hiking Trail
- Big Creek Scenic Area Trails
- Double Lake MTB-Trails
- ▲ LSHT Mile Marker
- LSHT Distance Point
- ▲ Hunt Season Camp
- P Trailhead Parking
- Highways
- Paved Roads
- Gravel Roads
- Seasonal Roads (*Closed FEB-AUG)
- Locked Service Road

Trailhead #11 Iron Ore
N 30.5460, W 95.1438

BIG CREEK SCENIC AREA
No Camping
No Campfires
No Hunting
No Gathering Plants

Trailhead #12
Big Creek Scenic Area
N 30.5059, W 95.0888












Trailhead #13 Tarkington
N 30.4929, W 95.1189

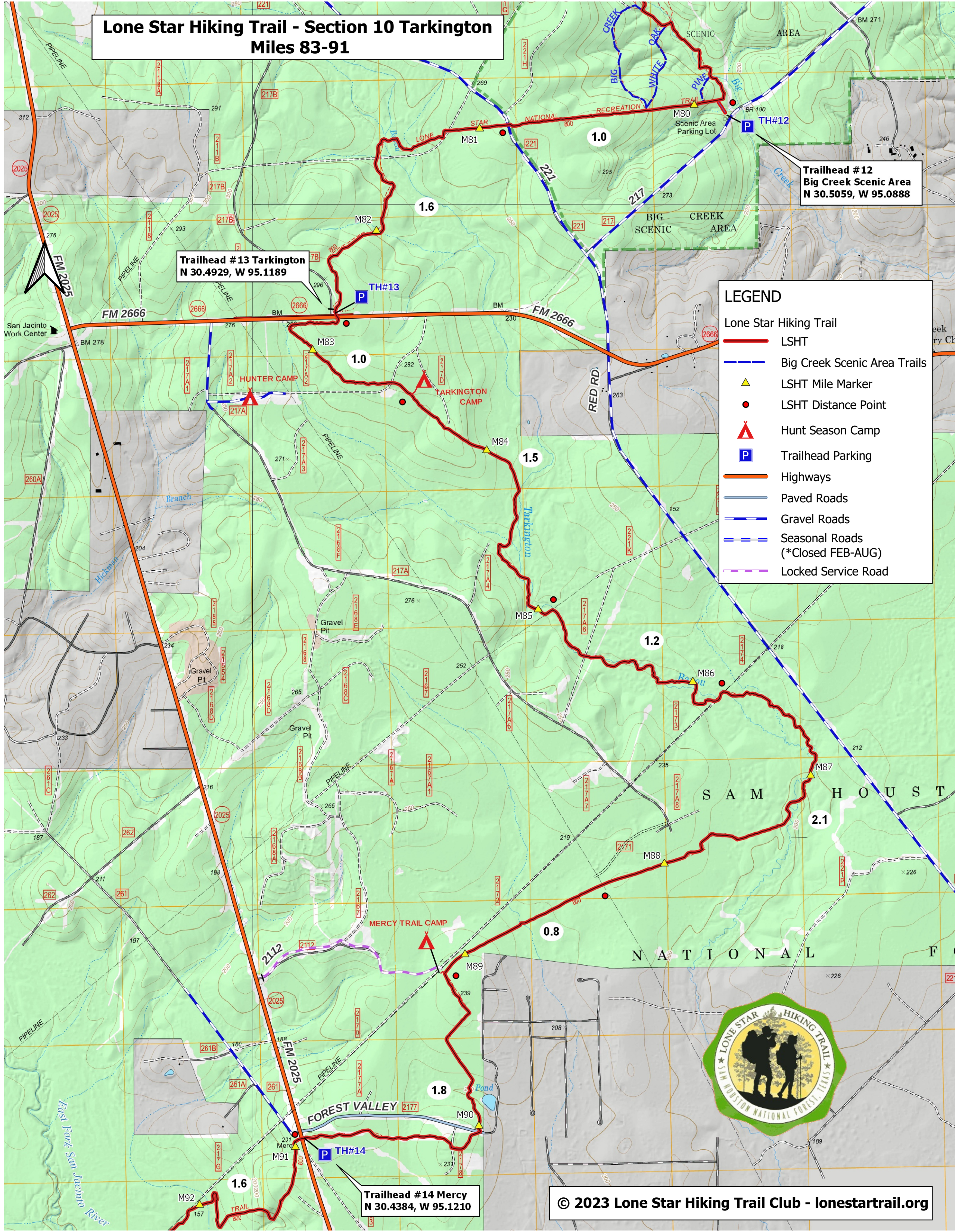
Lone Star Hiking Trail - Section 10 Tarkington Miles 83-91

Trailhead #12
Big Creek Scenic Area
N 30.5059, W 95.0888

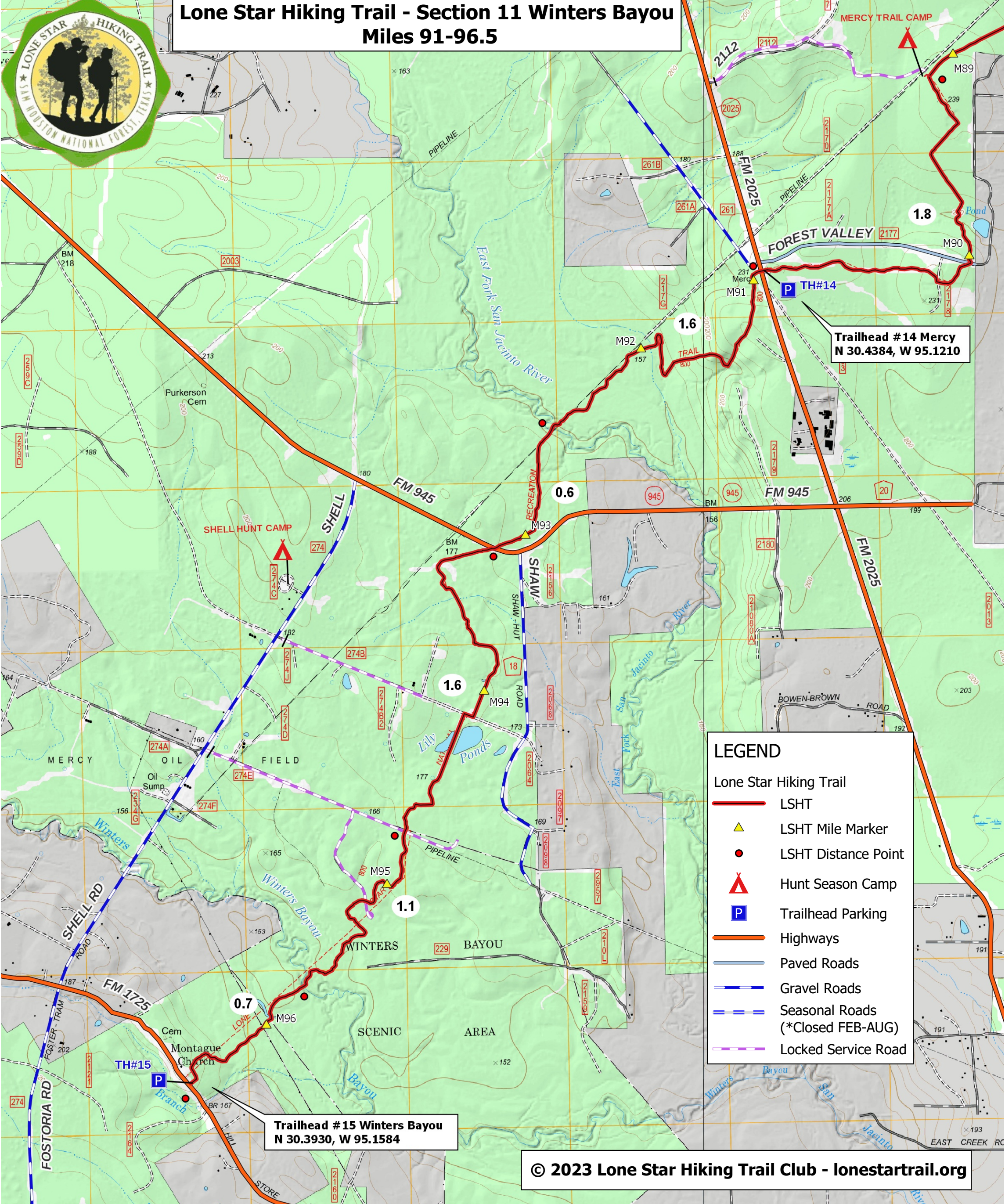
Trailhead #13 Tarkington
N 30.4929, W 95.1189

LEGEND

-  Lone Star Hiking Trail (LSHT)
-  Big Creek Scenic Area Trails
-  LSHT Mile Marker
-  LSHT Distance Point
-  Hunt Season Camp
-  Trailhead Parking
-  Highways
-  Paved Roads
-  Gravel Roads
-  Seasonal Roads (*Closed FEB-AUG)
-  Locked Service Road



Lone Star Hiking Trail - Section 11 Winters Bayou Miles 91-96.5



Trailhead #14 Mercy
N 30.4384, W 95.1210

Trailhead #15 Winters Bayou
N 30.3930, W 95.1584

LEGEND

- Lone Star Hiking Trail
- LSHT
- ▲ LSHT Mile Marker
- LSHT Distance Point
- ▲ Hunt Season Camp
- P Trailhead Parking
- Highways
- Paved Roads
- Gravel Roads
- Seasonal Roads (*Closed FEB-AUG)
- Locked Service Road