

Lone Star Hiking Trail Section 1 - Wilderness Miles 0- 10



Trailhead #1 Richards
N 30 32.32, W 95 47.09

Osburn
Mini-Lot
30 31.22,
95 41.09

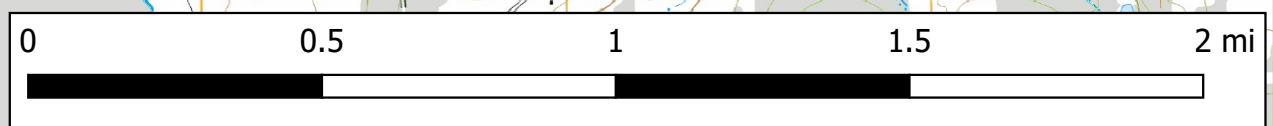
Trailhead #2 Sand Branch
N 30 30.66, W 95 45.41

Trailhead #3
N 30 30.62, W 95 43.07

Trailhead #4 Caney Creek
N 30 28.90, W 95 41.84

- Lone Star Hiking Trail
- LSHT
- Little Lake Creek Loop Trail
- - - North Wilderness Trail
- - - Connector Trails
- ⋯ LSHT Road Walk
- ▲ LSHT Mile Marker
- LSHT Distance Point
- ▲ Designated Hunting Season Camp
- P Trailhead Parking

- Highways
 - Paved Roads
 - - - Gravel Roads
 - - - Seasonal Roads (*Closed FEB-AUG)
 - - - Locked Service Road
- Ownership
- Sam Houston N. F.
 - Non-Forest Service





Lone Star Hiking Trail Section 2 - Kelly - Miles 9-16

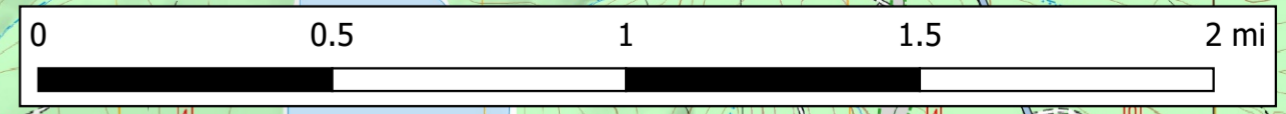
Trailhead #3
N 30 30.62, W 95 43.07

Osburn Mini-Lot
30 31.22, 95 41.09

Trailhead #6
S. Stubblefield
N 30 31.69, W 95 37.80

Trailhead #4 Caney Creek
N 30 28.90, W 95 41.84

Lone Star Hiking Trail	
	LSHT
	LLC Loop
	North Wilderness Trail
	Pole Creek Trail
	LSHT Road Walk
	LSHT Mile Marker
	LSHT Distance Point
	Designated Hunting Season Camp
	Trailhead Parking
Roads	
	Highways
	Paved Roads
	Gravel Roads
	Seasonal Roads (*Closed FEB-AUG)
	Locked Service Road
Ownership	
	Sam Houston N. F.
	Non-Forest Service





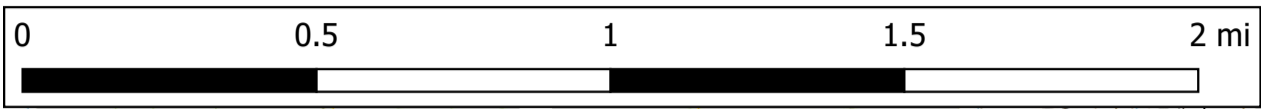
Lone Star Hiking Trail Section 3 - Stubblefield - Miles 16-26

Ownership

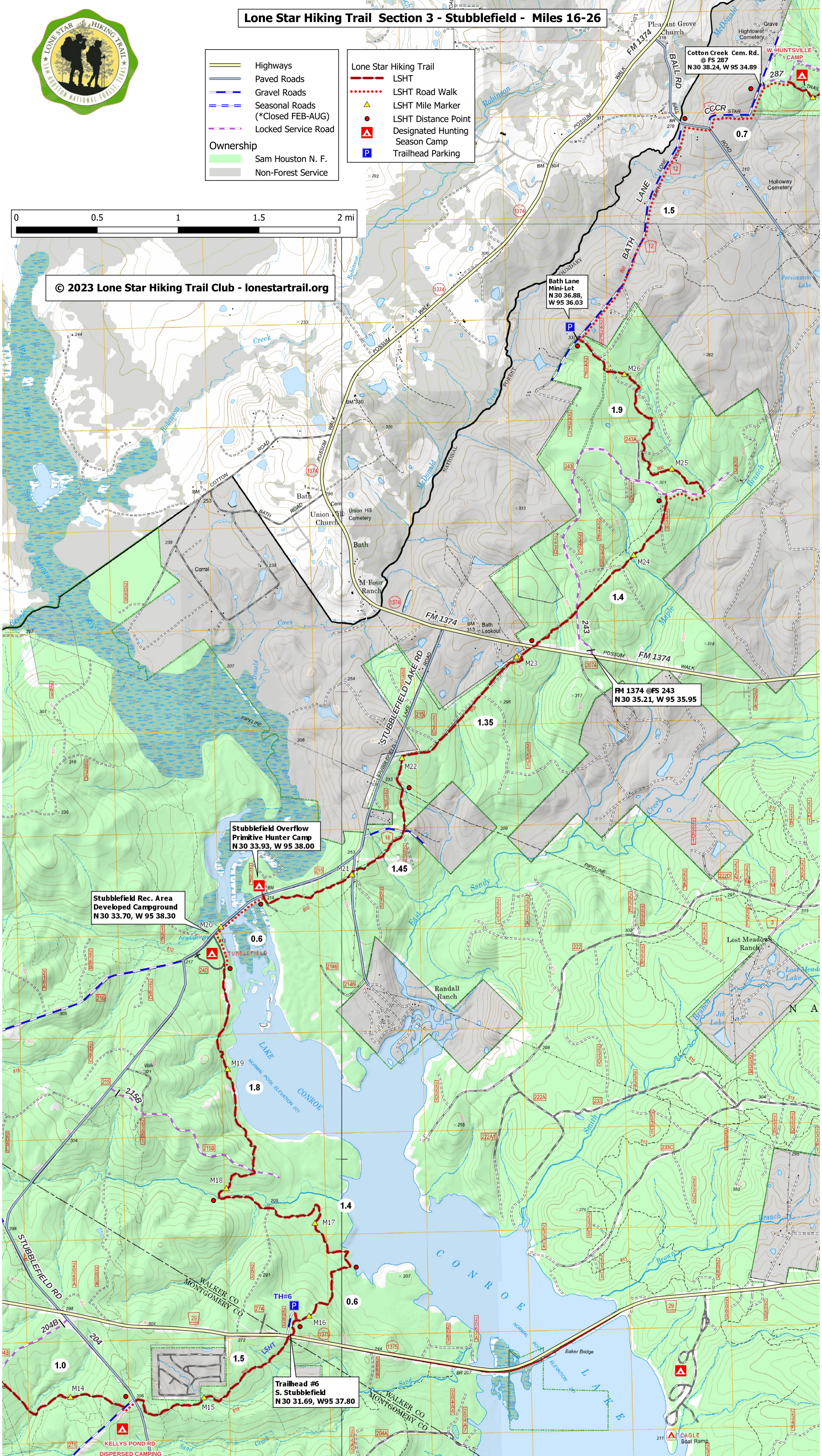
- Sam Houston N. F.
- Non-Forest Service

Lone Star Hiking Trail

- LSHT
- LSHT Road Walk
- LSHT Mile Marker
- LSHT Distance Point
- Designated Hunting Season Camp
- Trailhead Parking



© 2023 Lone Star Hiking Trail Club - lonestartrail.org



Stubblefield Overflow Primitive Hunter Camp
N 30 33.93, W 95 38.00

Stubblefield Rec. Area Developed Campground
N 30 33.70, W 95 38.30

Trailhead #6 S. Stubblefield
N 30 31.69, W 95 37.80

Bath Lane Mini-Lot
N 30 36.88, W 95 36.03

FM 1374 @ FS 243
N 30 35.21, W 95 35.95

Cotton Creek Cem. Rd.
@ FS 287
N 30 38.24, W 95 34.89



Lone Star Hiking Trail Section 4 - Huntsville - Miles 29-35

Trailhead #7 Huntsville
 N30 38.99, W 95 30.62

Cotton Creek Cem. Rd.
 @ FS 287
 N 30 38.24, W 95 34.89

Bath Lane Mini-Lot
 N 30 36.88,
 W 95 36.03

LSHT Crosses Dam and Spillway of
 of Camelia Lake.
 Camelia Lake is PRIVATE. No
 swimming, fishing, or camping.

LEGEND

Headquarters	Boat Rentals
Parking	Swimming Area
Restrooms	Day-use Area
Showers	Hiking-only Trail
Park Store	Fishing Pier
Nature Center	Boat Ramp
Water-only Sites	
Water and Electric Sites	
Full Hookup Sites	
Shelters	

Lone Star Hiking Trail

- LSHT
- LSHT Road Walk
- SHNF MTB Trails
- LSHT Mile Marker
- LSHT Distance Point
- Designated Hunting Season Camp
- Trailhead Parking

Ownership

- Sam Houston N. F.
- Non-Forest Service

Roads

- Highways
- Paved Roads
- Gravel Roads
- Locked Service Road

Lone Star Hiking Trail Section 5 - Phelps - Miles 35-45



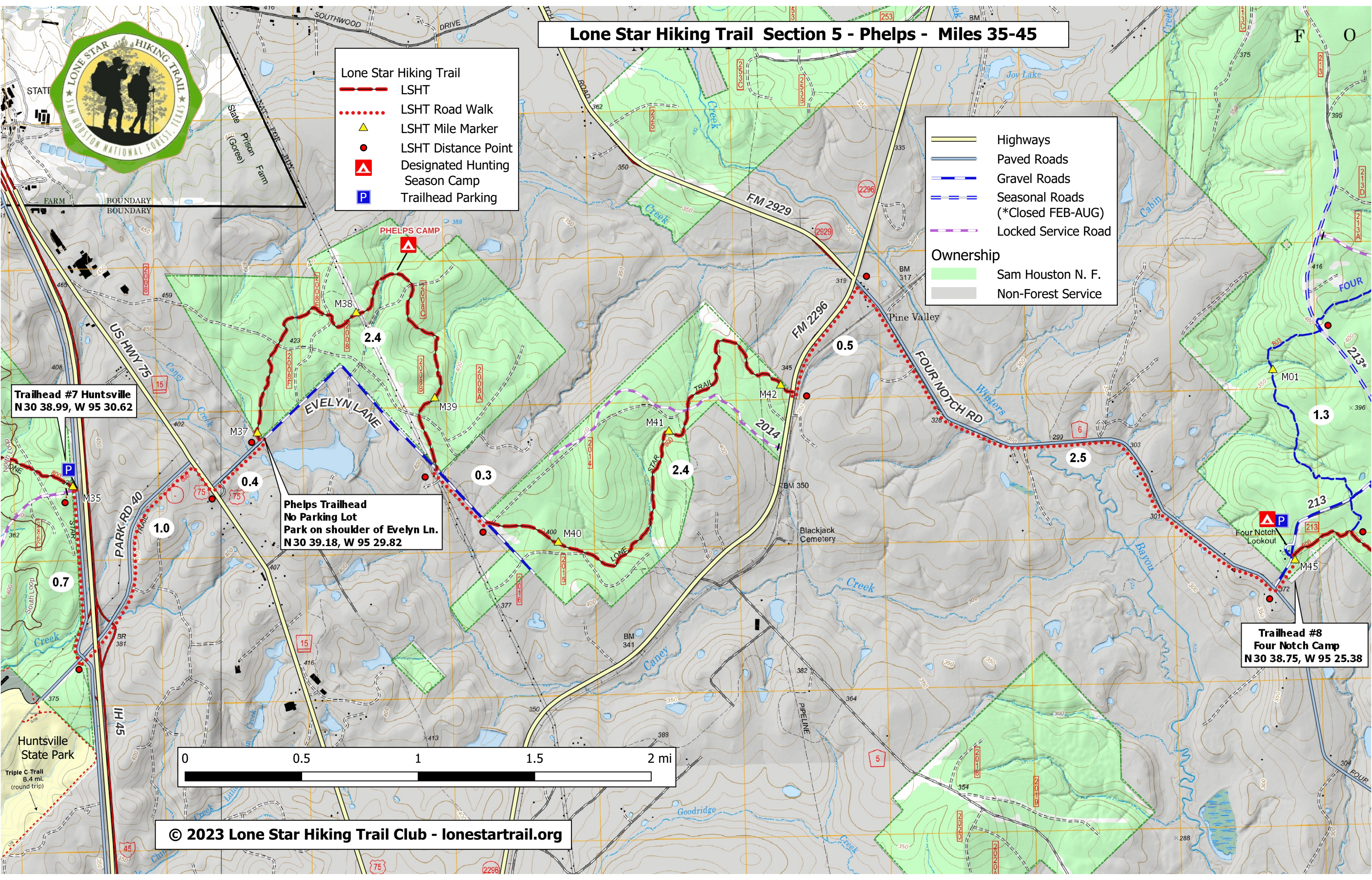
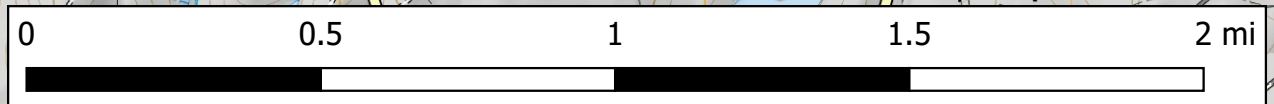
- Lone Star Hiking Trail**
- LSHT
 - LSHT Road Walk
 - ▲ LSHT Mile Marker
 - LSHT Distance Point
 - ▲ Designated Hunting Season Camp
 - P Trailhead Parking

- Ownership**
- Sam Houston N. F.
 - Non-Forest Service
- Road Types**
- Highways
 - Paved Roads
 - Gravel Roads
 - Seasonal Roads (*Closed FEB-AUG)
 - Locked Service Road

Trailhead #7 Huntsville
N 30 38.99, W 95 30.62

Phelps Trailhead
No Parking Lot
Park on shoulder of Evelyn Ln.
N 30 39.18, W 95 29.82

Trailhead #8
Four Notch Camp
N 30 38.75, W 95 25.38



Lone Star Hiking Trail - Section 6 - 4 Notch - Miles 45-54



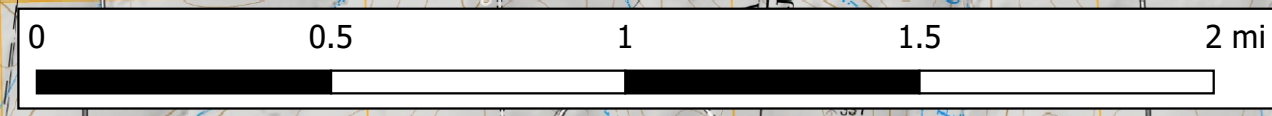
LEGEND

- Lone Star Hiking Trail
- 4 Notch Loop Trail
- ... LSHT Road Walk
- ▲ LSHT Mile Marker
- LSHT Distance Point
- ▲ Designated Hunting Season Camp
- P Trailhead Parking
- Highways
- Paved Roads
- Gravel Roads
- Seasonal Roads (*Closed FEB-AUG)
- Locked Service Road
- Sam Houston NF Lands

**Trailhead #8
Four Notch Camp
N 30 38.75, W 95 25.38**

**LSHT @ FS 206
30 38.89, 95 22.39**

**FS 202 @ FS 207
N 30 38.01, W 95 19.17**



Lone Star Hiking Trail Section 7 - Big Woods - Miles 54.2-62.8



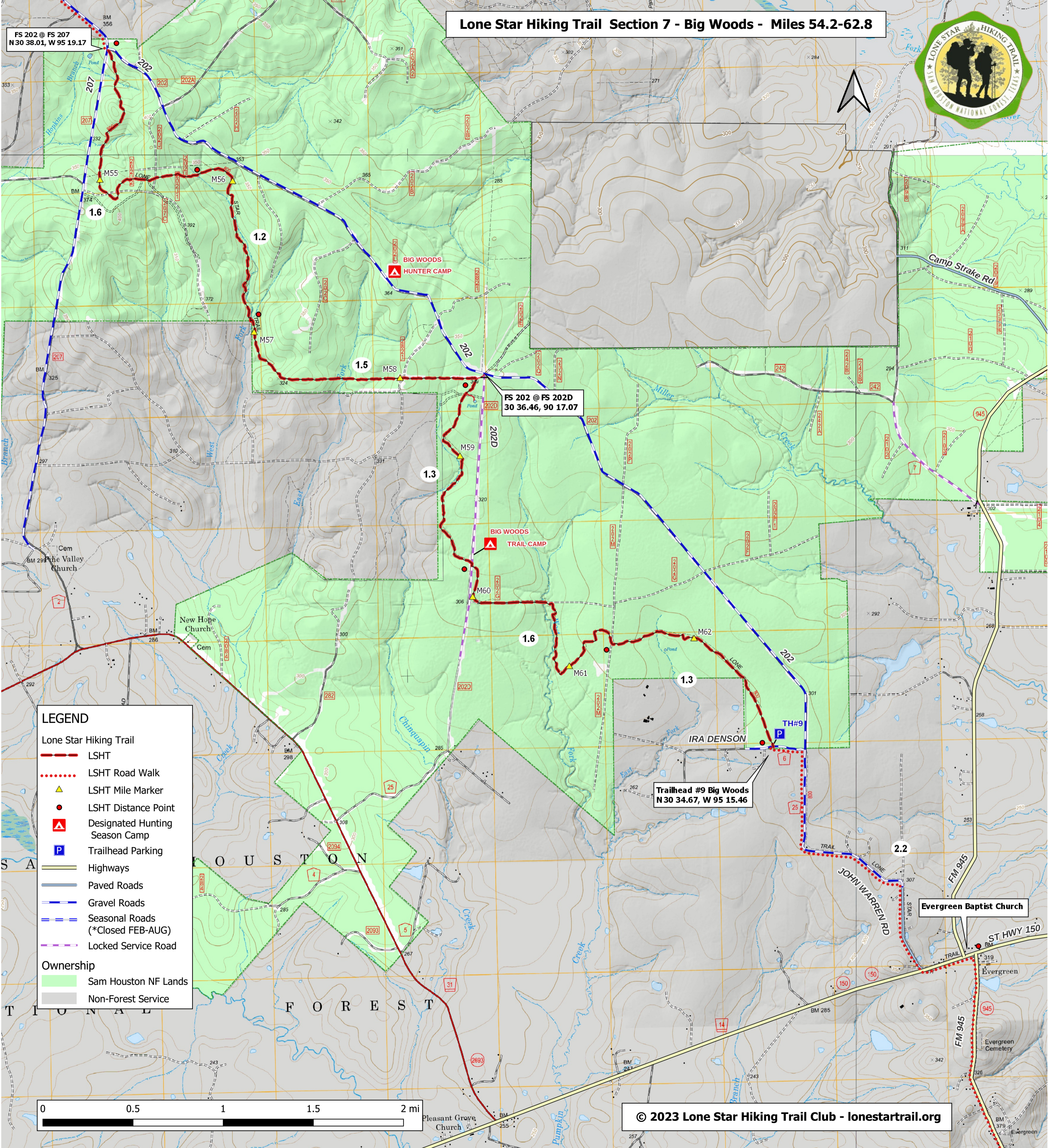
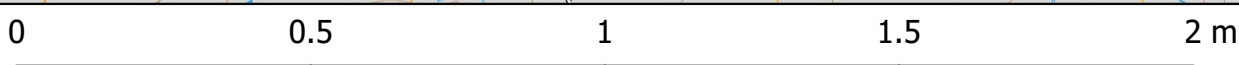
FS 202 @ FS 207
N 30 38.01, W 95 19.17

FS 202 @ FS 202D
30 36.46, 90 17.07

Trailhead #9 Big Woods
N 30 34.67, W 95 15.46

LEGEND

- Lone Star Hiking Trail
 - LSHT (Red dashed line)
 - LSHT Road Walk (Red dotted line)
 - LSHT Mile Marker (Yellow triangle)
 - LSHT Distance Point (Red circle)
- Designated Hunting Season Camp (Red triangle with 'A')
- Trailhead Parking (Blue square with 'P')
- Highways (Yellow line)
- Paved Roads (Grey line)
- Gravel Roads (Blue line)
- Seasonal Roads (*Closed FEB-AUG) (Blue dashed line)
- Locked Service Road (Purple dashed line)
- Ownership
 - Sam Houston NF Lands (Green background)
 - Non-Forest Service (Grey background)



Lone Star Hiking Trail Section 8 - Magnolia - Miles 67.4-74



Evergreen Baptist Church

Entrance to Double Lake Recreation Area
Developed Campground
N 30 33.91, W 95 08.68

Lone Star Hiking Trail

- LSHT
- LSHT Road Walk
- ▲ LSHT Mile Marker
- LSHT Distance Point
- ▲ Designated Hunting Season Camp
- P Trailhead Parking

Ownership

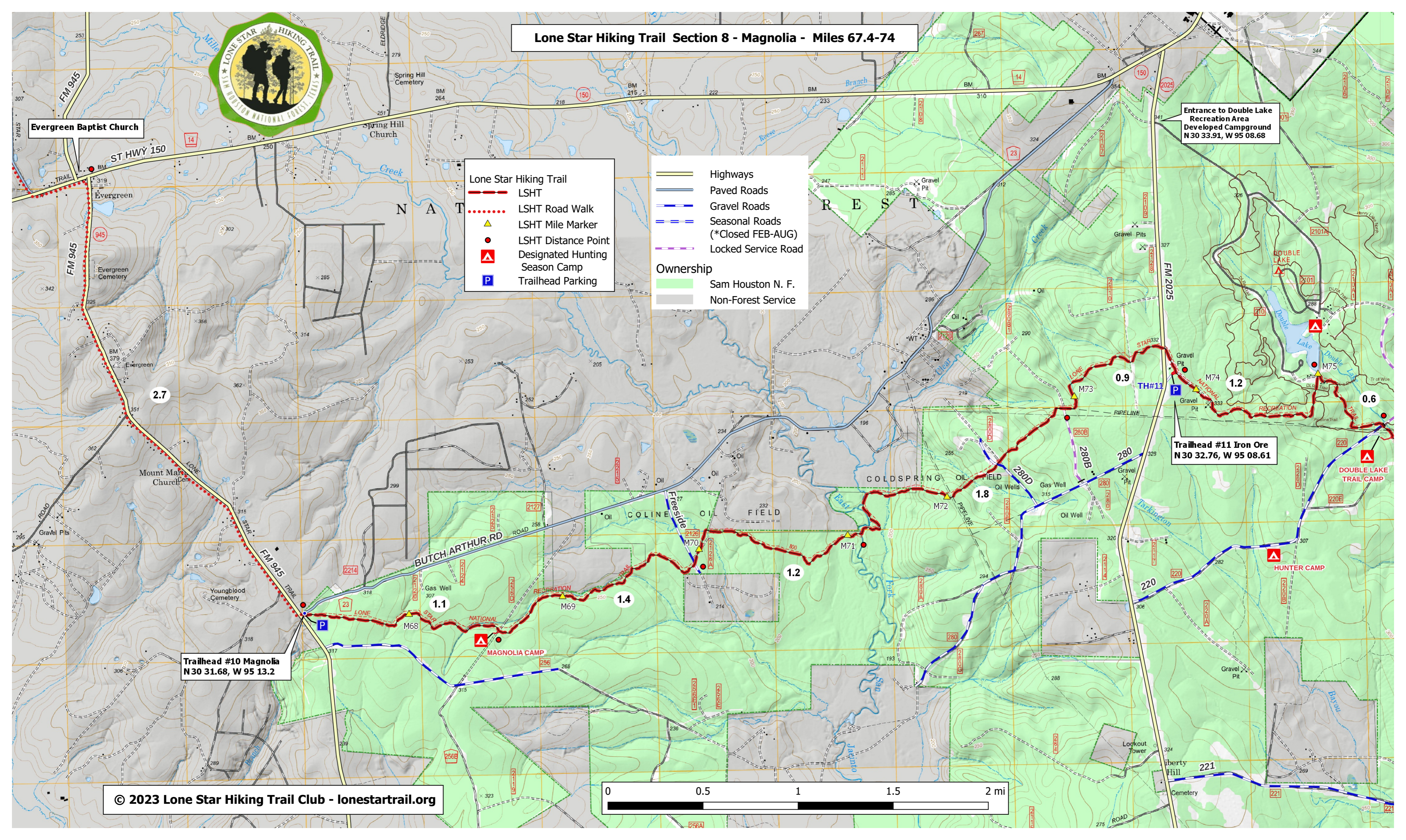
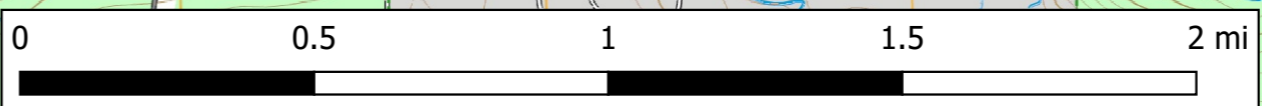
- Sam Houston N. F.
- Non-Forest Service

Highways

- Highways
- Paved Roads
- Gravel Roads
- Seasonal Roads (*Closed FEB-AUG)
- Locked Service Road

Trailhead #10 Magnolia
N 30 31.68, W 95 13.2

Trailhead #11 Iron Ore
N 30 32.76, W 95 08.61



Lone Star Hiking Trail - Section 9 - Big Creek - Miles 73-83



LEGEND	
	Lone Star Hiking Trail LSHT
	Big Creek Scenic Area Trails
	Double Lake MTB-Trails
	LSHT Mile Marker
	LSHT Distance Point
	Designated Hunting Season Camp
	Trailhead Parking
	Highways
	Paved Roads
	Gravel Roads
	Seasonal Roads (*Closed FEB-AUG)
	Locked Service Road
	Sam Houston National Forest

Entrance to Double Lake Recreation Area
Developed Campground
N 30 33.91, W 95 08.68

Trailhead #11 Iron Ore
N 30 32.76, W 95 08.61

BIG CREEK SCENIC AREA
No Camping
No Campfires
No Hunting
No Gathering Plants

Trailhead #12
Big Creek Scenic Area
N 30 30.36, W 95 05.33








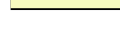





Trailhead #13 Tarkington
N 30 29.57, W 95 07.13

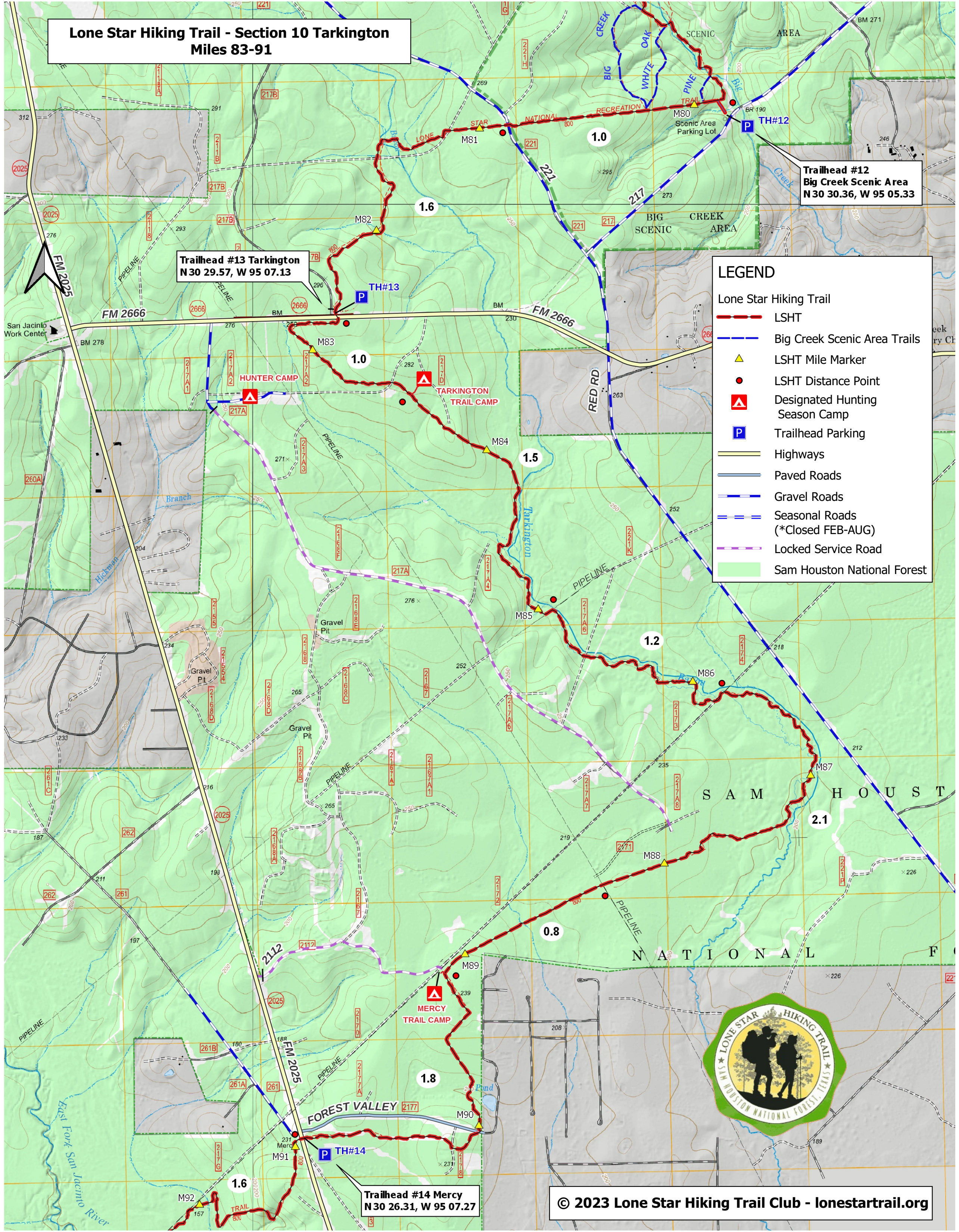
**Lone Star Hiking Trail - Section 10 Tarkington
Miles 83-91**

**Trailhead #12
Big Creek Scenic Area
N 30 30.36, W 95 05.33**

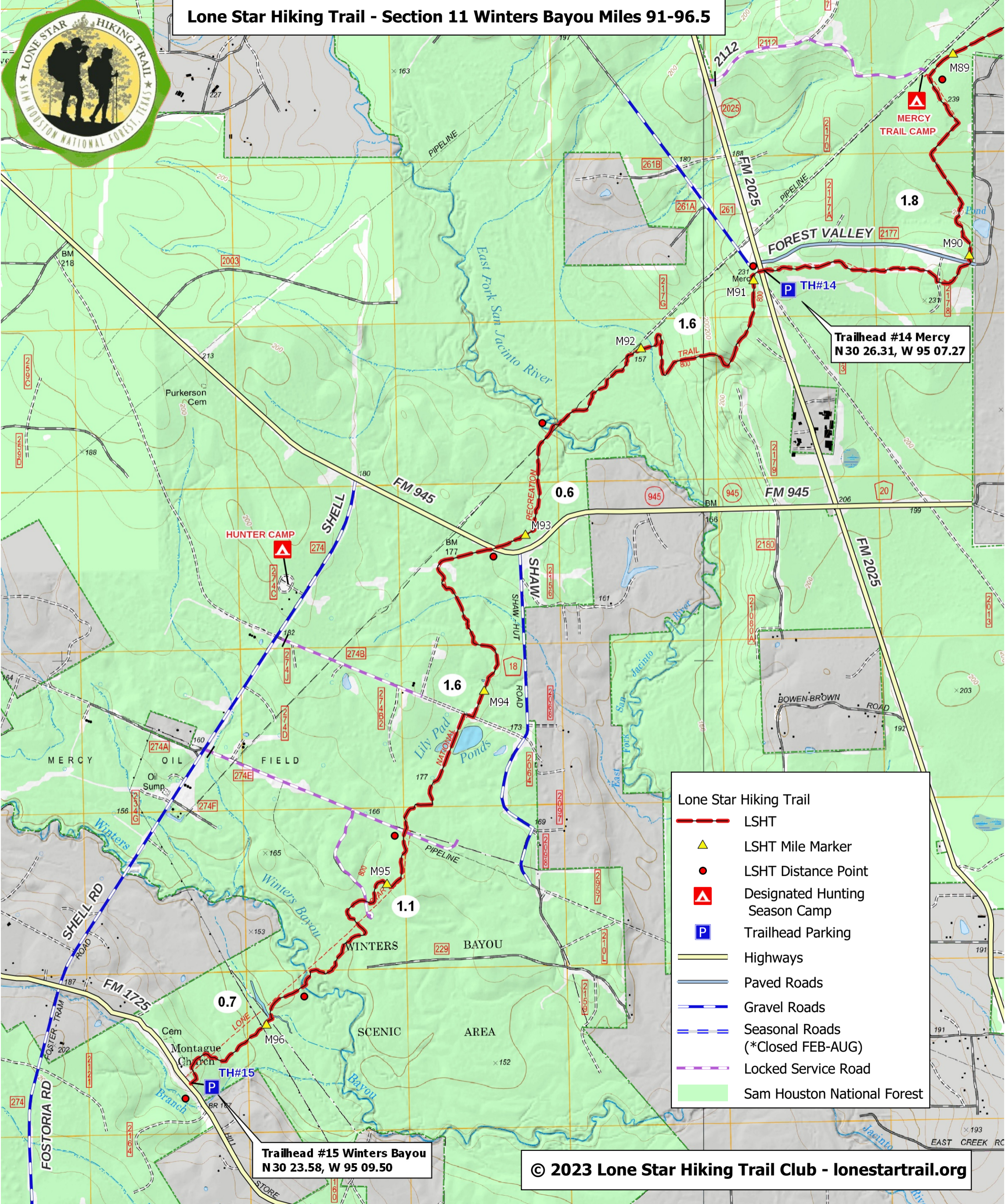
**Trailhead #13 Tarkington
N 30 29.57, W 95 07.13**

LEGEND

-  Lone Star Hiking Trail
-  LSHT
-  Big Creek Scenic Area Trails
-  LSHT Mile Marker
-  LSHT Distance Point
-  Designated Hunting Season Camp
-  Trailhead Parking
-  Highways
-  Paved Roads
-  Gravel Roads
-  Seasonal Roads (*Closed FEB-AUG)
-  Locked Service Road
-  Sam Houston National Forest



Lone Star Hiking Trail - Section 11 Winters Bayou Miles 91-96.5



Trailhead #14 Mercy
N 30 26.31, W 95 07.27

Trailhead #15 Winters Bayou
N 30 23.58, W 95 09.50

Lone Star Hiking Trail

- LSHT
- LSHT Mile Marker
- LSHT Distance Point
- Designated Hunting Season Camp
- Trailhead Parking
- Highways
- Paved Roads
- Gravel Roads
- Seasonal Roads (*Closed FEB-AUG)
- Locked Service Road
- Sam Houston National Forest