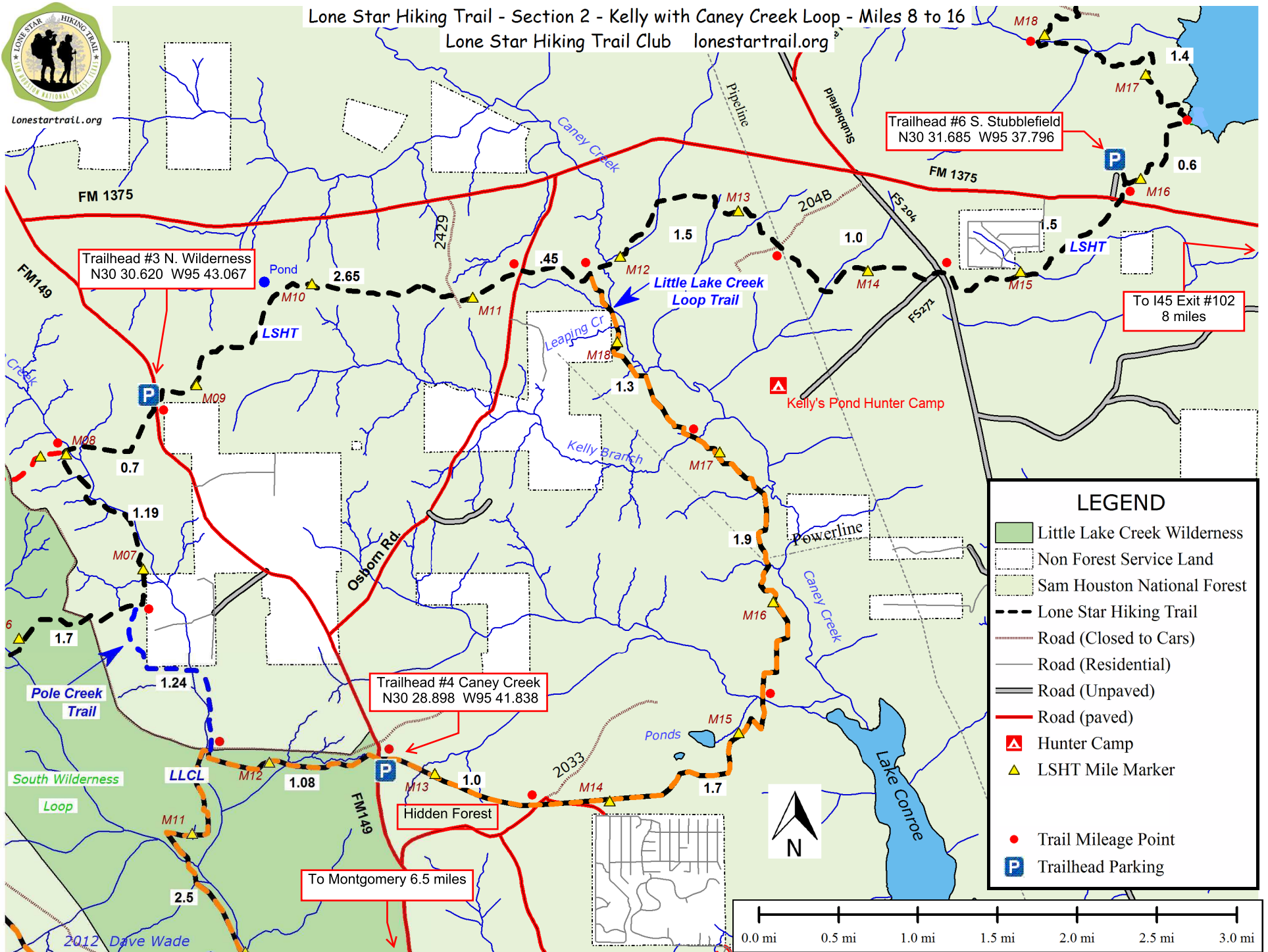




lonestartrail.org

Lone Star Hiking Trail - Section 2 - Kelly with Caney Creek Loop - Miles 8 to 16

Lone Star Hiking Trail Club lonestartrail.org



Trailhead #3 N. Wilderness
N30 30.620 W95 43.067

Trailhead #6 S. Stubblefield
N30 31.685 W95 37.796

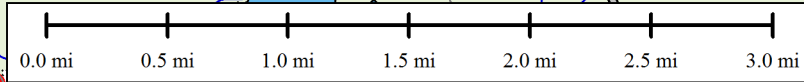
Trailhead #4 Caney Creek
N30 28.898 W95 41.838

To I45 Exit #102
8 miles

To Montgomery 6.5 miles

LEGEND

- Little Lake Creek Wilderness
- Non Forest Service Land
- Sam Houston National Forest
- Lone Star Hiking Trail
- Road (Closed to Cars)
- Road (Residential)
- Road (Unpaved)
- Road (paved)
- Hunter Camp
- LSHT Mile Marker
- Trail Mileage Point
- Trailhead Parking



2012 Dave Wade